

GYPSUM.

OPEN

COLLEZIONE

Open è una collezione di piastrelle in cemento basata sul rapporto armonico tra la geometria delle piastrelle e le dimensioni delle fughe, in un dialogo che prende corpo attraverso un uso attento del colore di cemento e stucchi. Abbiamo lavorato sulle linee di giunzione e le abbiamo inclinate: in questo modo le piastrelle sembrano muoversi, come i mattoni di un vecchio muro, imperfetti e segnati dal trascorrere del tempo.

Le fratture triangolari rompono la superficie ed ogni elemento sembra appoggiato ad un altro, in un delicato equilibrio. Open è disponibile in due formati che si adattano a spazi di diversa ampiezza e che possono essere posati uno accanto all'altro, in una proporzione di 1 a 2. La collezione è adatta sia a spazi pubblici sia a spazi privati, in interni ed esterni.

COLLECTION

Open is a concrete tile collection intended to create a harmonious relationship between the geometry of the tiles and the dimensions of the junctions, in a dialogue that is shaped through the careful use of the colour of the concrete and grout. We have worked on the junction lines, tilting them in a way that the tiles seem to move, like the bricks of an old wall, imperfect and marked by the passing of time.

The triangular fractures break the surface and each element seems to lean against one another, in a delicate balance. Open is available in two sizes that adapt to spaces of different dimensions and that can be placed next to each other, in a proportion of 1 to 2. The collection is suitable for both public and private spaces, indoors and outdoors.

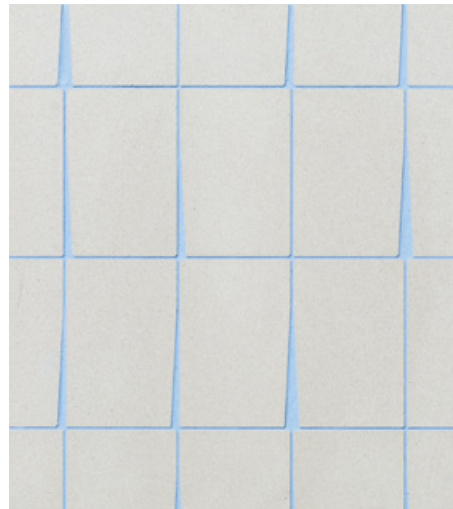
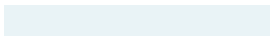
Marco Merendi & Diego Vencato

OPEN | colour tones



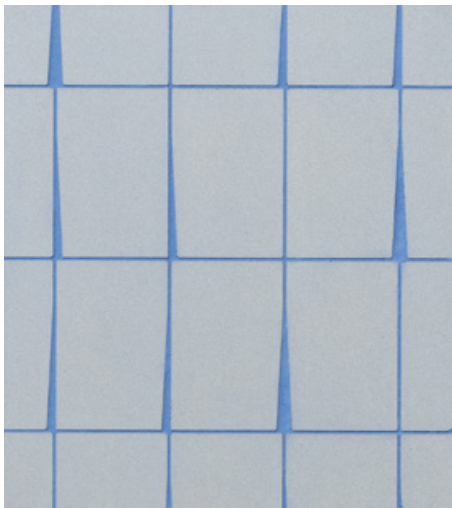
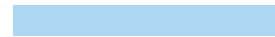
MINIMUM - I

colore / colour: 110
stucco / grout: kerakoll 38 husky



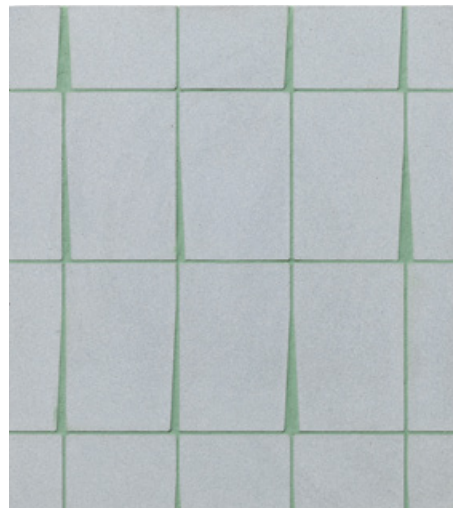
MINIMUM - II

colore / colour: 110
stucco / grout: kerakoll 47 mediterraneo



MINIMUM - III

colore / colour: 430
stucco / grout: kerakoll 15 oceano



MINIMUM - IV

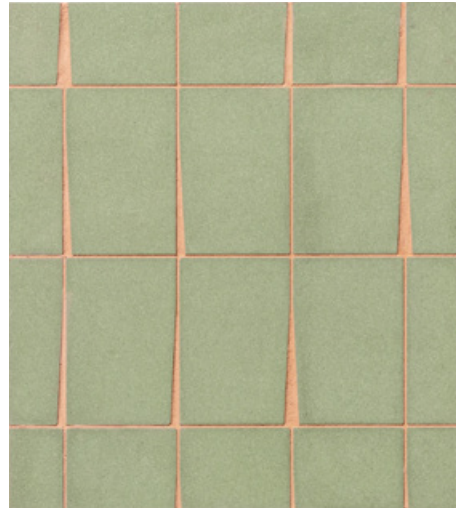
colore / colour: 430
stucco / grout: kerakoll 49 muschio





BOTANY - I

colore / colour: 540
stucco / grout: kerakoll 41 eucalipto



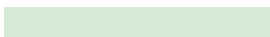
BOTANY - II

colore / colour: 540
stucco / grout: kerakoll 10 terracotta



BOTANY - III

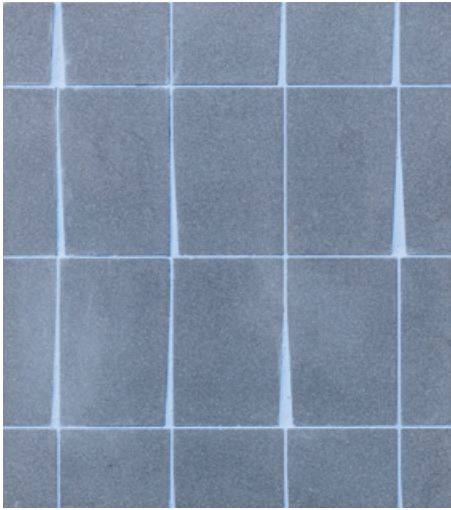
colore / colour: 505
stucco / grout: kerakoll 41 eucalipto



TERRACOTTA - I

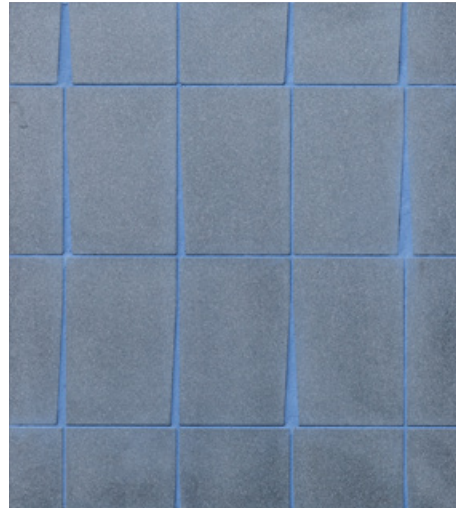
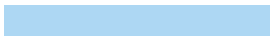
colore / colour: 730
stucco / grout: kerakoll 10 terracotta





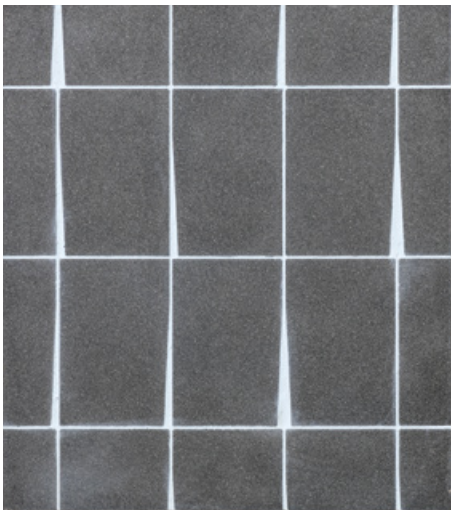
DEEP - I

colore / colour: 480
stucco / grout: kerakoll 47 mediterraneo



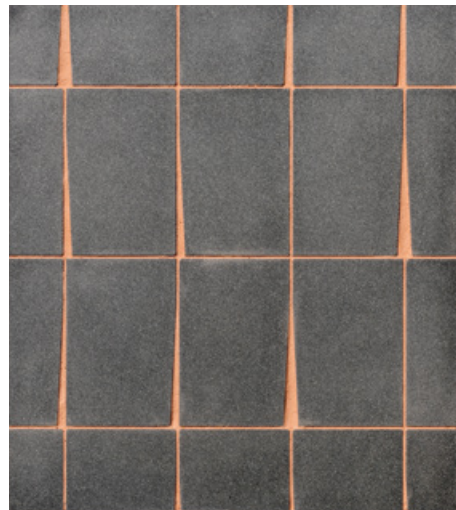
DEEP - II

colore / colour: 480
stucco / grout: kerakoll 15 oceano



LAVA - I

colore / colour: 180
stucco / grout: kerakoll 38 husky

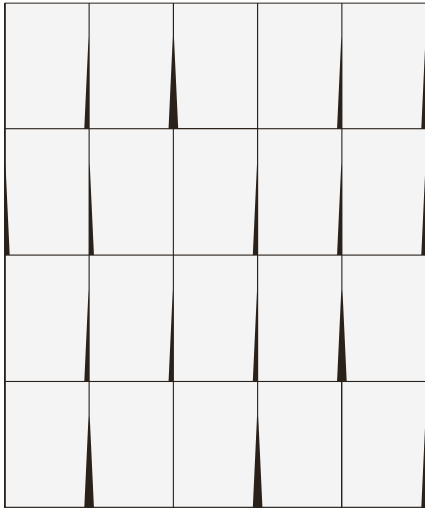


LAVA - II

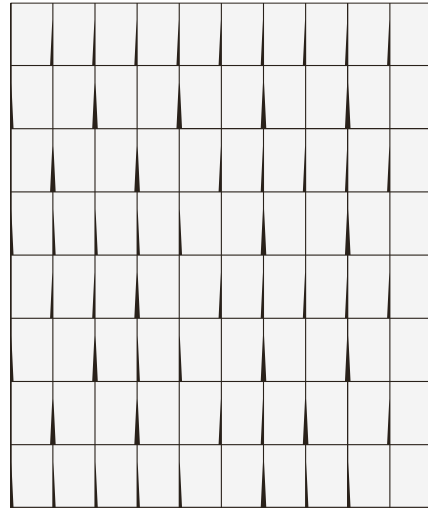
colore / colour: 180
stucco / grout: kerakoll 10 terracotta



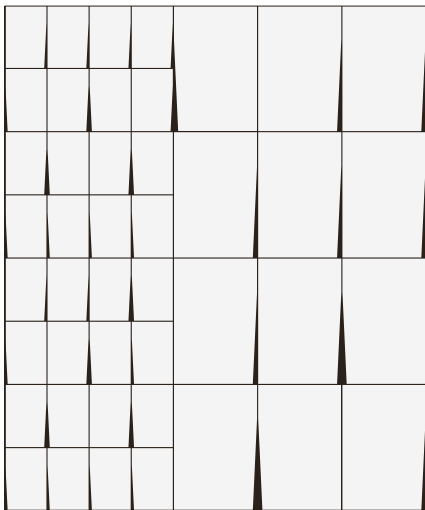
OPEN | architectural compositions



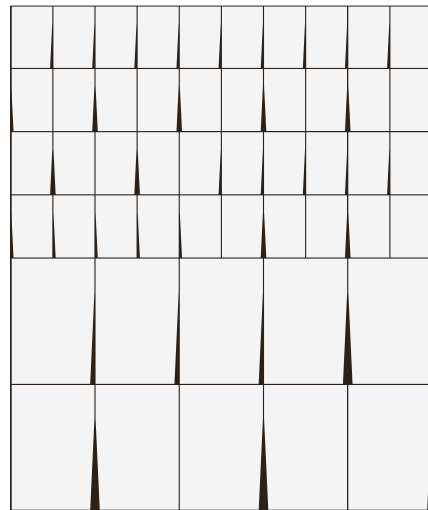
UNIFORME - formato **large** /
REGULAR - size **large**



UNIFORME - formato **small** /
REGULAR - size **small**



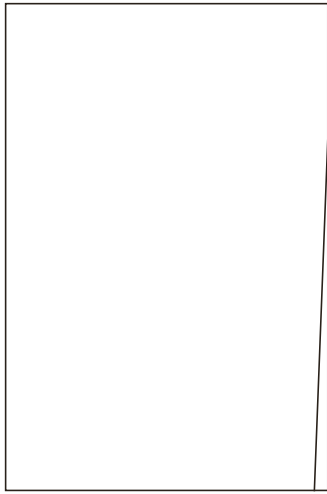
MISTO VERTICALE - formati **large + small** /
MIXED VERTICAL - sizes **large + small**



MISTO ORIZZONTALE - formati **large + small** /
MIXED HORIZONTAL - sizes **large + small**

OPEN | sizes

| | |
|------------------|---|
| Design | Marco Merendi & Diego Vencato 2019 |
| Material | Cementoskin® di Gypsum, cemento ad alte prestazioni colorato in massa / Cementoskin® by Gypsum, high-performance concrete integrally colored |
| Features | <p>Superficie trattata con prodotto impermeabilizzante e antimacchia che mantiene un aspetto naturale e morbido al tatto. Il processo produttivo, interamente artigianale, genera piccole variazioni di dimensione e colore che sono da considerarsi caratteristica integrante e peculiare del prodotto /</p> <p>A surface treated with waterproofing and stain-resistant products with a finish which feels natural and soft to the touch. The production process, entirely handcrafted, can generate small differences in sizes and colours that are to be considered an integral and peculiar feature of the product</p> |
| Thickness | 11 mm |

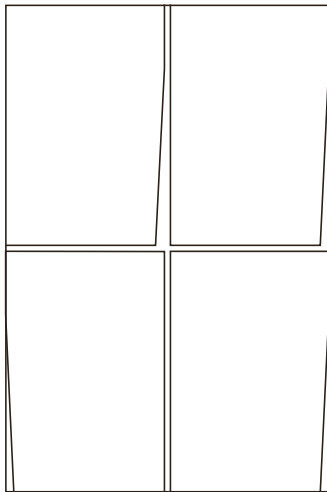


large A

$15 \times 22,6$
 $5'' \frac{29}{32} \times 8'' \frac{57}{64}$

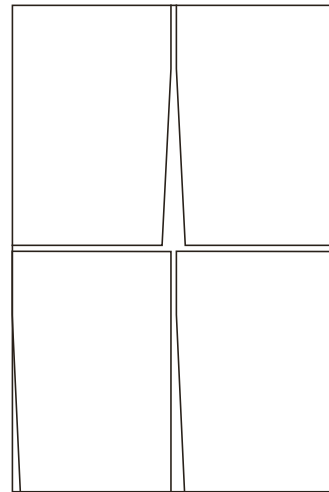


large B



small A

$15 \times 22,6$
 $5'' \frac{29}{32} \times 8'' \frac{57}{64}$



small B

MARCO MERENDI & DIEGO VENCATO

Marco Merendi

Si laurea in Architettura presso la facoltà di Architettura di Firenze e collabora con Minardi Formula 1, con il Team Honda Gresini, con lo Studio Cerri & Associati, con lo studio Ivana Porfiri, e con Artemide (responsabile Dipartimento Design). Insegna alla Scuola Politecnica di Design (SPD) di Milano e i suoi lavori sono stati pubblicati in diverse riviste internazionali come Modo, Case da Abitare, Interni, Elle Decor, Casabella. Progetta per aziende come Lavazza, Gruppo Pentole Agnelli, FontanaArte, Viabizzuno (premio Design Plus 2002 Francoforte con la lampada “Bamboo”), davide groppi, MDF Italia, Terra Moretti – Contadi Castaldi, Danese Milano, Rapsel (selezione XXIII Compasso d’Oro ADI 2013 con la serie “Amarcord”), Kundalini, made a mano, Agape, Fratelli Guzzini.

He graduated from the Faculty of Architecture of Florence and cooperated with Minardi Formula 1, Team Honda Gresini, Studio Cerri & Associati, Ivana Porfiri studio, and Artemide (in charge of Design Department).

He teaches at the Scuola Politecnica di Design (SPD) in Milan and his works have been published in several international magazines such as Modo, Case da Abitare, Interni, Elle Decor, Casabella. He designs for companies like Lavazza, Gruppo Pentole Agnelli, FontanaArte, Viabizzuno (Frankfurt Design Plus 2002 award with “Bamboo” lamp), davide groppi, MDF Italia, Terra Moretti – Contadi Castaldi, Danese Milano, Rapsel (“Amarcord” selected for the XXIII Compasso d’Oro ADI award in 2013), Kundalini, made a mano, Agape, Fratelli Guzzini.

Diego Vencato

Si laurea al Politecnico di Milano e collabora con Clino Trini Castelli, con Artemide (responsabile dei Progetti Speciali), e con lo studio Parisotto+Formenton Architetti. Nel 2006 apre Diego Vencato Industrial Design.

Progetta per aziende come Horm, Segno, Mobileffe, Rapsel, r&dlab – Michele Ruffin Creative Group, Eurochocolate, Dainese, MDF Italia, Albeflex, Samsung, Yonder, Pi.Mar, Nodus Rug, Agape, Fratelli Guzzini.

I suoi lavori sono stati pubblicati sia sul web che su numerose riviste internazionali tra cui Interni, Abitare, Ottagono, Icon e Wallpaper*.

Nel 2007 e nel 2010 vince il primo premio al concorso Young&Design.

Nel 2011 il mobile contenitore “A/R” (Horm) viene selezionato per il XXII premio Compasso d’Oro ADI.

He graduated from the Politecnico of Milan and cooperated with Clino Trini Castelli, Artemide (in charge of Special Project Development), and Parisotto+Formenton Architetti studio.

In 2006 he set up Diego Vencato Industrial Design.

He works as a designer for Horm, Segno, Mobileffe, Rapsel, r&dlab – Michele Ruffin Creative Group, Eurochocolate, Dainese, MDF Italia, Albeflex, Samsung, Yonder, Pi.Mar, Nodus Rug, Agape, Fratelli Guzzini.

His works have been published both on the web and in several international magazines such as Interni, Abitare, Ottagono, Icon and Wallpaper*.

1st prize at Young&Design award in 2007 and 2010 edition.

“A/R” cupboard (Horm) selected for the XXII Compasso d’Oro ADI award in 2011.

© 2019 Gypsum
Tutti i diritti riservati / All rights reserved

Made in Italy

GYPSUM srl
Via C. A. Dalla Chiesa, s.n.
24048 Treviolo BG
Italia
T +39 035 200085
gypsum-arte.com